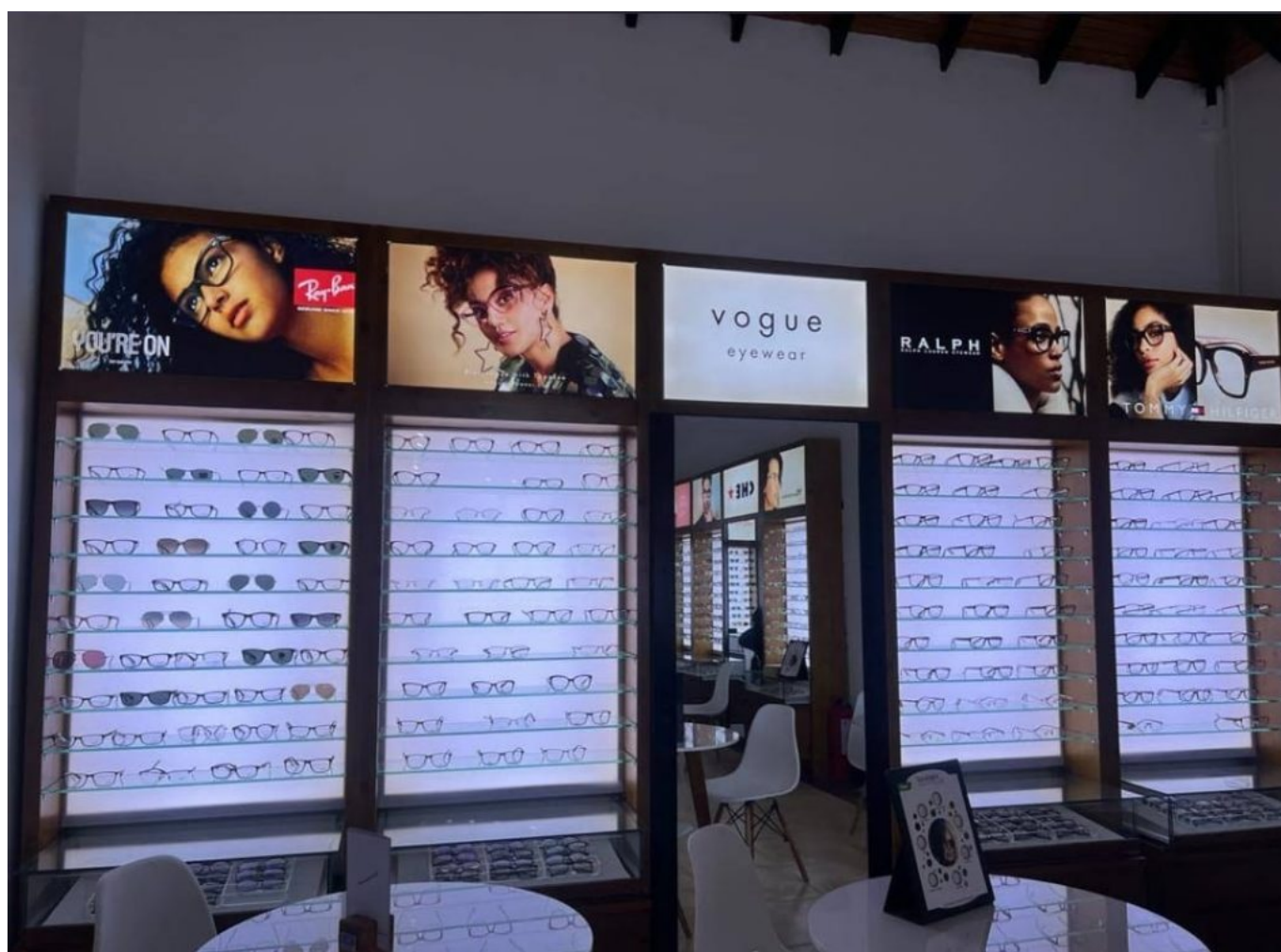


# Vision Care Jaffna Branch Celebrates 14th Anniversary with Community Health Initiative



*Vision Care Jaffna Branch.*

Vision Care celebrated the 14th anniversary of its Jaffna branch by organizing an

Eye and ENT camp at its premises.

The event aimed to provide essential eye and ENT care to the community, promote overall well-being, and reaffirm the company's dedication to enhancing the quality of life of its communities.

Hundreds of patients visited the Eye and ENT camp throughout the day to have their eyes and hearing tested by the experienced healthcare professionals of the Vision Care Jaffna branch.

Based on the results, patients received personalized medical advice and recommendations for corrective measures, such as prescription glasses or contact lenses, and guidance on necessary follow-up treatments to maintain their vision and ENT health.

Vision Care's Jaffna branch offers ample parking and a modern ambiance. Its spacious interiors feature a comprehensive range of products and services, including spectacles, sunglasses, contact lenses, and hearing aids. Equipped with cutting-edge eye and hearing care equipment, the branch is staffed by highly trained professionals who deliver expert care.

Customers can avail themselves of the latest eye care solutions and choose from an impressive selection of global eyewear brands, such as Ray-Ban, Boss, Vogue, Tommy Hilfiger, Carrera, Polo Ralph, Arnette, and more.

Additionally, the branch provides hearing care solutions from Oticon, a renowned manufacturer with over a century of experience in developing innovative hearing aids for both adults and children.